



MONTHLY MEMBERSHIP PROGRESS REPORT

District 27 B1

Results as of: 02/28/2018

GMT: MICHAEL MOLEND A

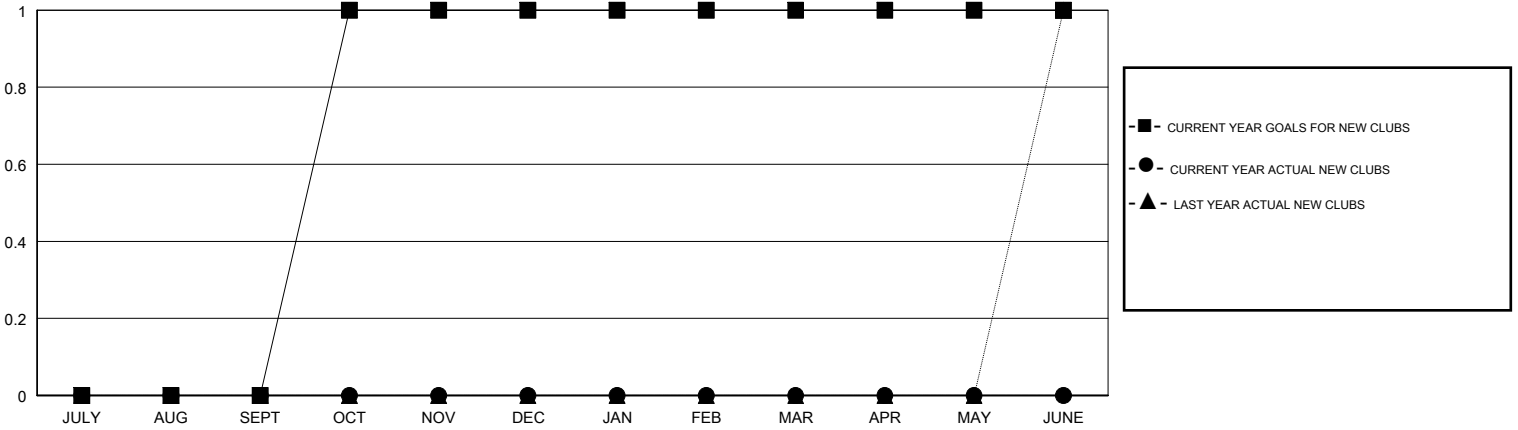
LOCATION WISCONSIN

GMT CA

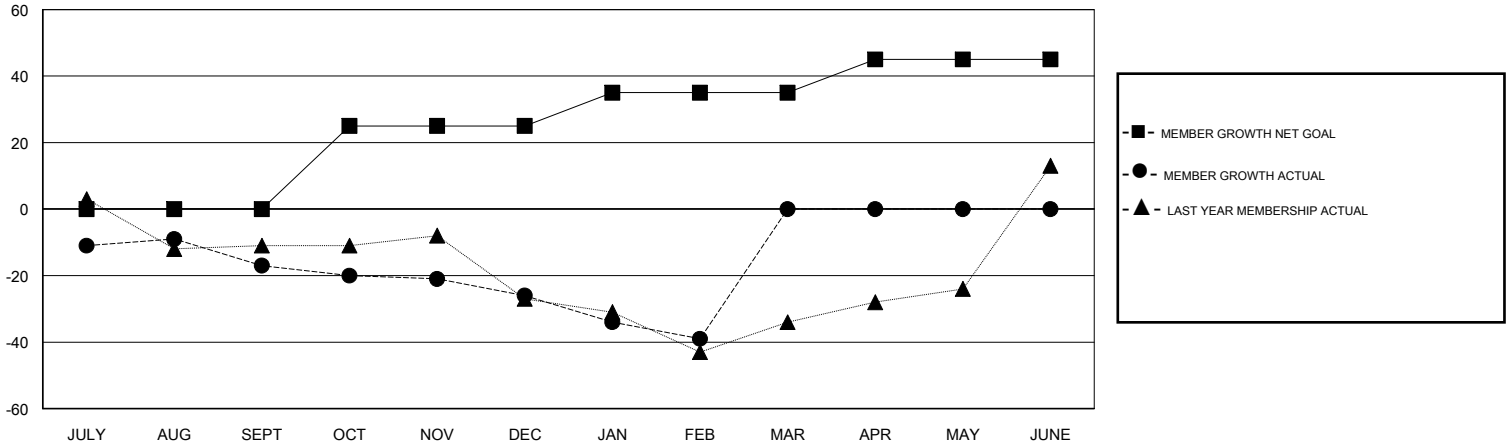
Clubs			
RESULTS FOR 2017-2018			
QUARTER	NEW CLUB GOAL	NEW CLUBS	DROPPED CLUBS
JULY/AUG/SEPT	0	0	0
OCT/NOV/DEC	1	0	0
JAN/FEB/MAR	0	0	0
APR/MAY/JUNE	0	0	0

Members			
RESULTS FOR 2017-2018			
QUARTER	MEMBER GROWTH NET GOAL	MEMBER GROWTH ACTUAL	DROPPED MEMBERS ACTUAL (including transfers)
JULY/AUG/SEPT	0	28	40
OCT/NOV/DEC	25	49	53
JAN/FEB/MAR	10	21	34
APR/MAY/JUNE	10	0	0

GOALS AND ACTUAL NEW CLUBS CUMULATIVE



GOALS AND ACTUAL MEMBERS CUMULATIVE



DROPPED CLUBS: 0

41 CLUBS OF 69 ADDED 1 OR MORE NEW MEMBERS

GENDER DISTRIBUTION	
MALE	1,566 (79.09%)
FEMALE	414 (20.91%)
Women Percentage Fiscal Year Goal: 22%	

DROPPED MEMBERS	
DECEASED	29
CLUB CANCELLED	0
OTHER	98
TOTAL	127

[CLICK HERE FOR CUMULATIVE MEMBERSHIP DATA](#)

TOTAL FAMILY UNIT MEMBERS	336
FAMILY MEMBERS PAYING HALF DUES	171